

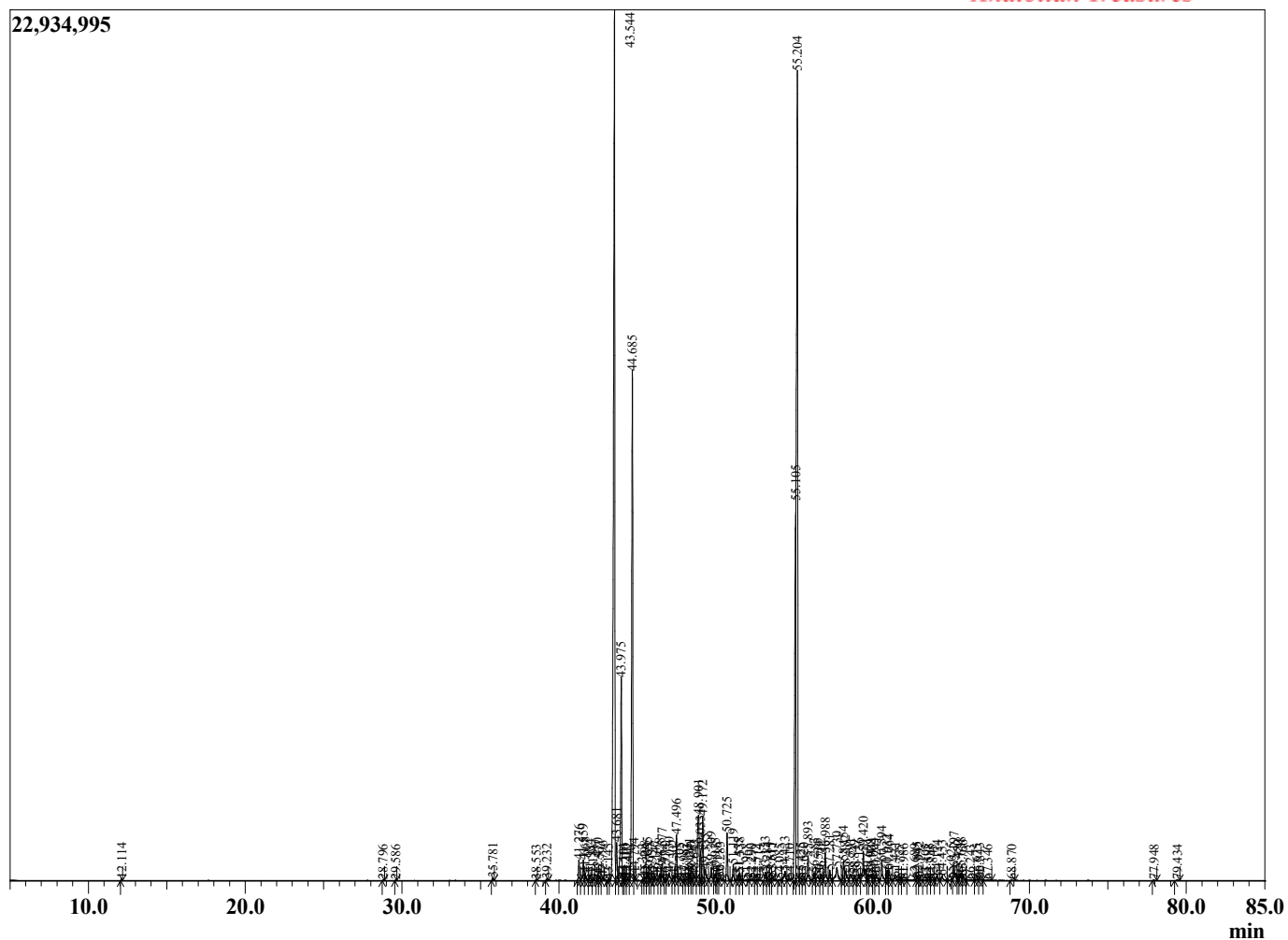
Sample Information

Sample Type : Essential Oil
 Sample Name : Juniperus virginiana
 Injection : 0.10
 Volume :

Cedarwood Blood
 Lot# USW27-WK
 Country: USA



Chromatogram Juniperus virginiana



R.Time	Name	Area%
12.114	alpha-Pinene	0.03
28.796	alpha-Terpineol	0.01
29.586	Verbenone analogue	0.01
35.781	Unidentified	0.05
38.553	Presilphiperfol-7-ene	0.01
39.232	Unidentified	0.03
41.276	alpha-Cedrene	0.46
41.559	alpha-Duprezianene	0.52
41.668	7-epi-Sesquithujene	0.20
41.984	Isolongifolene	0.13
42.181	Unidentified	0.01
42.470	beta-Longipinene	0.14
42.577	alpha-Funebrene	0.13
42.796	2-epi-alpha-Funebrene	0.09
43.145	Acora-3,7(14)-diene	0.02
43.544	alpha-Cedrene	25.76
43.681	beta-Caryophyllene	0.91
43.975	beta-Cedrene	4.87
44.101	trans-Cadine-1,4-diene	0.05
44.210	beta-Patchoulene	0.03
44.402	(+)-epi-Bicyclosesquiphellandrene	0.05
44.685	cis-Thujopsene	12.36
44.794	Isobazzanene	0.12
45.353	Nootkatene	0.03
45.498	beta-Barbatene	0.09
45.655	Prezizaene	0.23
45.773	trans-beta-Farnesene	0.07
45.957	Prezizaene isomer	0.06
46.147	Longifolene analogue	0.10
46.428	alpha-Acoradiene	0.16
46.577	beta-Acoradiene	0.41
46.774	9-epi-Caryophyllene isomer	0.01
47.030	10-epi-beta-Acoradiene	0.27
47.307	cis-Thujopsene	0.13
47.496	beta-Chamigrene	1.06
47.705	Unidentified	0.05
47.982	beta-Selinene	0.04
48.193	Valencene	0.03
48.341	beta-Alaskene	0.16
48.440	Amorpha-4,7(11)-diene	0.05
48.643	Himalchalone isomer	0.17
48.901	Pseudowiddrene	2.39
49.033	alpha-Chamigrene	0.66
49.172	Cuparene	1.55
49.335	alpha-Alaskene	0.39
49.709	Alaskene isomer	0.38
49.975	Unidentified	0.21
50.116	beta-Sesquiphellandrene	0.04
50.283	trans-gamma-Bisabolene	0.07
50.725	gamma-Cuprenene	1.12
51.119	Unidentified	0.37
51.455	Unidentified	0.16
51.538	Unidentified	0.18
51.968	Unidentified	0.04
52.290	Unidentified	0.07
52.572	Unidentified	0.01

R.Time	Name	Area%
52.714	Unidentified	0.02
53.153	Unidentified	0.21
53.284	Unidentified	0.09
53.515	Caryophyllene oxide	0.05
53.611	Unidentified	0.10
54.085	Unidentified	0.05
54.423	Funebrol	0.36
54.710	Longiborneol	0.08
55.105	Widdrol	9.06
55.204	Cedrol	23.46
55.425	Unidentified	0.08
55.620	Valerianol	0.07
55.893	Epicedrol	0.64
56.283	2-epi-alpha-Cedren-3-one	0.19
56.534	Unidentified	0.20
56.702	alpha-Acorenol	0.19
56.988	Unidentified	0.78
57.281	Unidentified	0.29
57.730	Junicedranone isomer	0.64
58.154	Cedr-8-en-15-ol	0.51
58.282	Unidentified	0.37
58.591	Unidentified + Isocedranol isomer	0.30
58.849	Junicedranone	0.14
59.136	Isocedranol	0.19
59.420	epi-alpha-Bisabolol	1.13
59.691	Copaenal isomer	0.16
59.908	Cedr-8-en-13-ol	0.30
60.064	Copaenal	0.17
60.241	cis-gamma-Atlantone	0.24
60.594	Unidentified	0.56
60.932	Thujopsenal	0.29
61.064	Unidentified	0.26
61.431	Unidentified	0.12
61.725	Unidentified	0.02
61.986	Unidentified	0.06
62.689	Unidentified	0.09
62.845	Unidentified	0.08
62.992	Unidentified	0.08
63.405	Unidentified	0.02
63.588	Unidentified	0.02
63.845	Unidentified	0.02
64.124	13-Hydroxy valencene	0.13
64.433	Unidentified	0.16
65.025	Unidentified	0.05
65.197	Unidentified	0.48
65.450	Cyclocolorenone	0.13
65.638	Nootkatone	0.26
65.766	Unidentified	0.12
66.243	Unidentified	0.05
66.675	Unidentified	0.04
66.843	Unidentified	0.07
67.346	Unidentified	0.02
68.870	Unidentified	0.01
77.948	Abietatriene	0.01
79.434	Abietadiene	0.02
		100.00